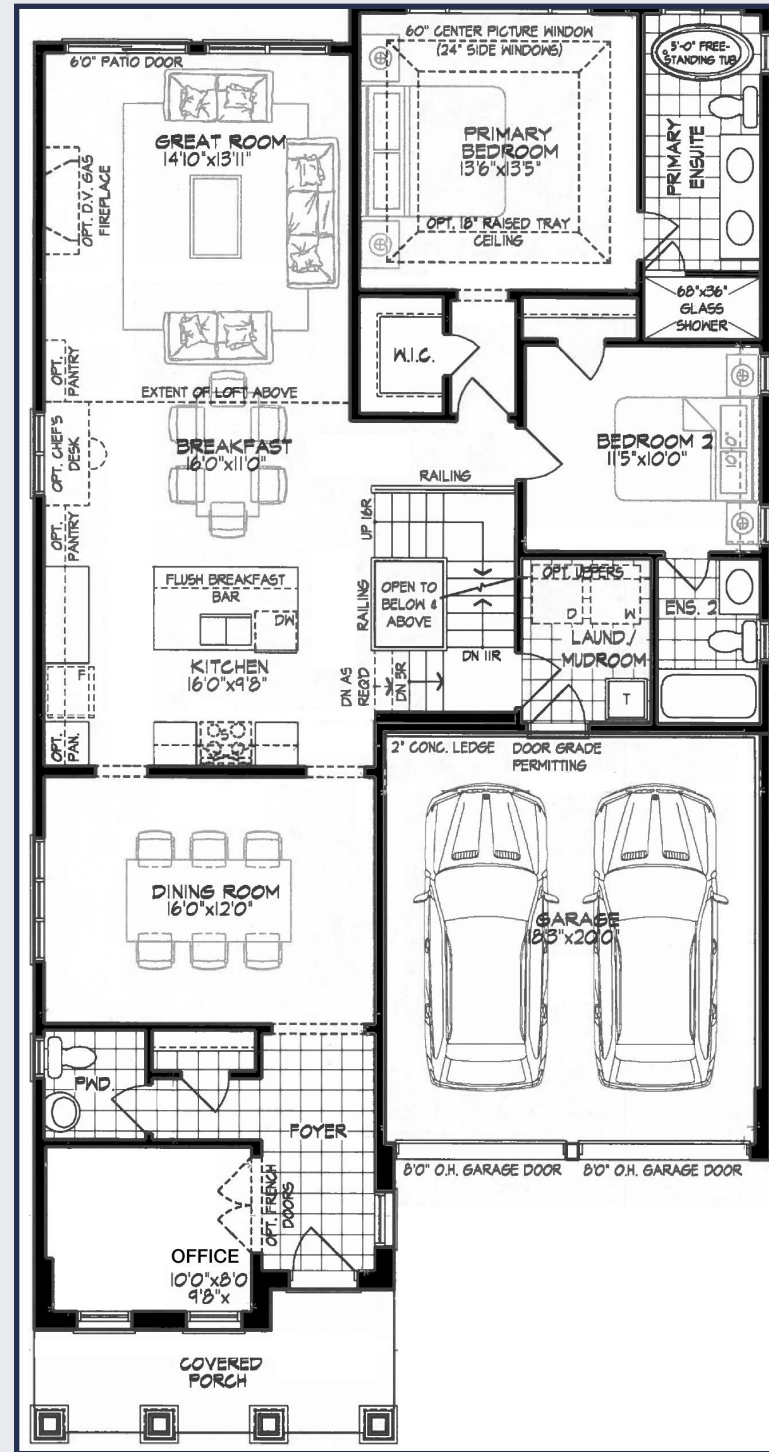


## A 3D architectural rendering of a two-story house. The house features a gabled roof with dark grey shingles. The main body of the house is finished with light beige horizontal siding. The front porch has a gabled roof supported by four square columns, with the base finished in stacked stone. There are two windows on the porch, each with a stone sill. The central entrance has a dark door with a transom window. To the right is a two-car garage with dark wood double doors, each featuring a transom window. The house is set against a light blue sky with soft clouds, and a large green tree is visible on the left side of the frame.



**ALLIANCE**  
www.alliancehomes.ca



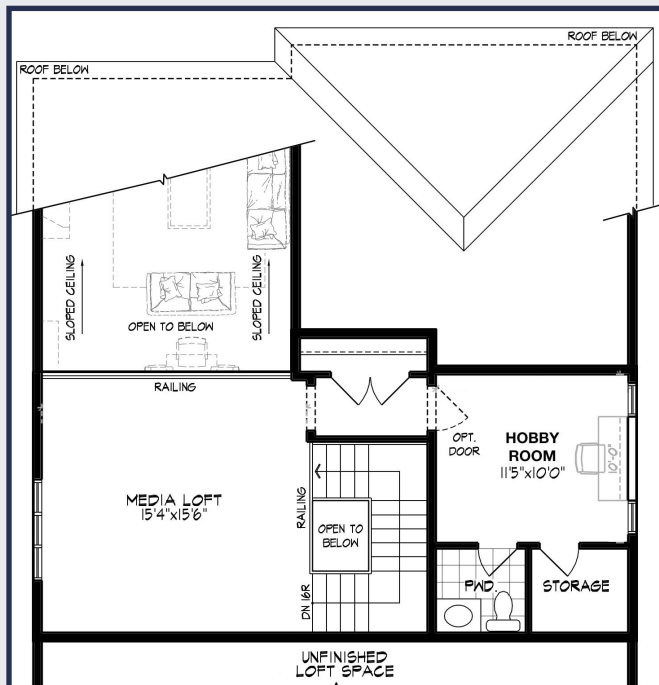
The floor plan for the second level includes the following areas and features:

- Media Loft (15'9" x 15'6"):** A large open area with a sloped ceiling, featuring a sofa and a television. It is labeled "OPEN TO BELOW" and has a railing along the edge.
- Hobby Room (11'5" x 10'0"):** A room with a sloped ceiling, containing a desk and chair. It has an "OPT. DOOR" leading to the Media Loft and is labeled "OPEN TO BELOW".
- Unfinished Loft Space:** A large rectangular area at the bottom of the plan, labeled "UNFINISHED LOFT SPACE".
- Staircase:** Located between the Media Loft and the Unfinished Loft Space, labeled "OPEN TO BELOW".
- Storage:** Two storage areas are shown, one near the Hobby Room and another near the Unfinished Loft Space.
- Entry:** An entry area with a door leading into the Unfinished Loft Space.
- Roof Below:** Indicated by dashed lines and labels at the top, bottom, and right edges of the plan.

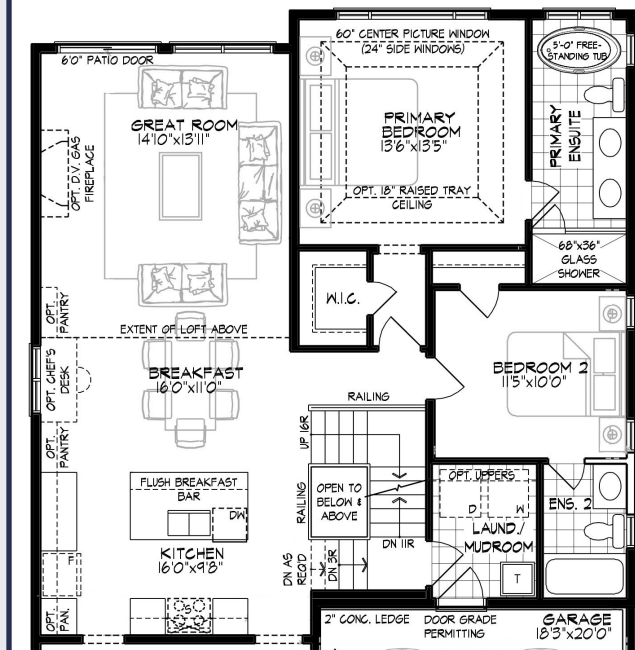


Hedge Road Landing  
Jackson's Point

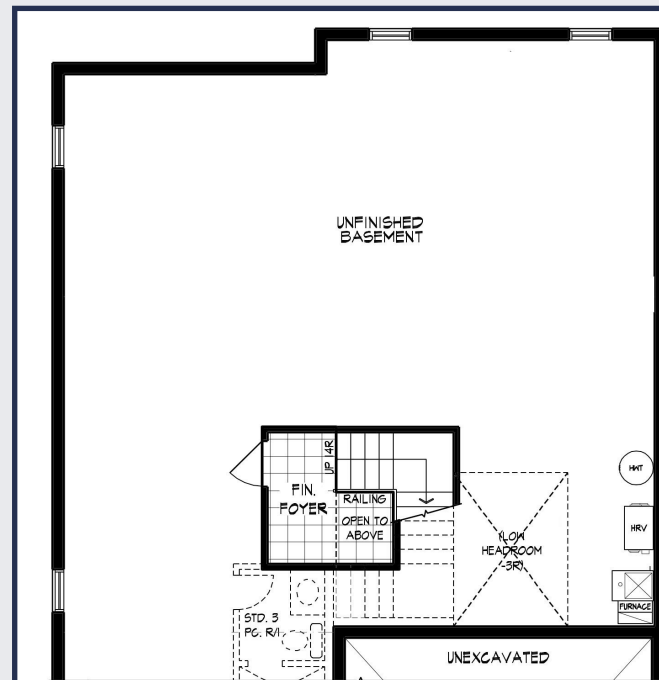




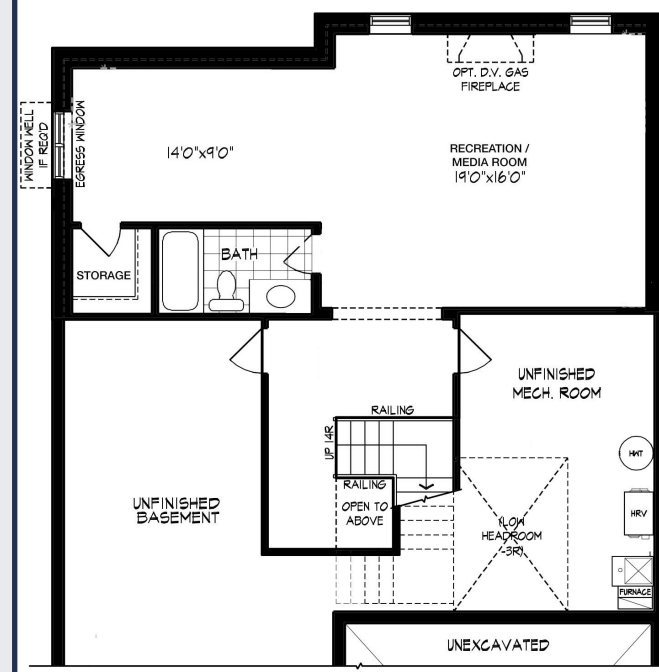
PARTIAL LOFT FLOOR PLAN, 'B'



PARTIAL GROUND FLOOR PLAN, EL. 'B'



PARTIAL BASEMENT PLAN, EL. 'B'

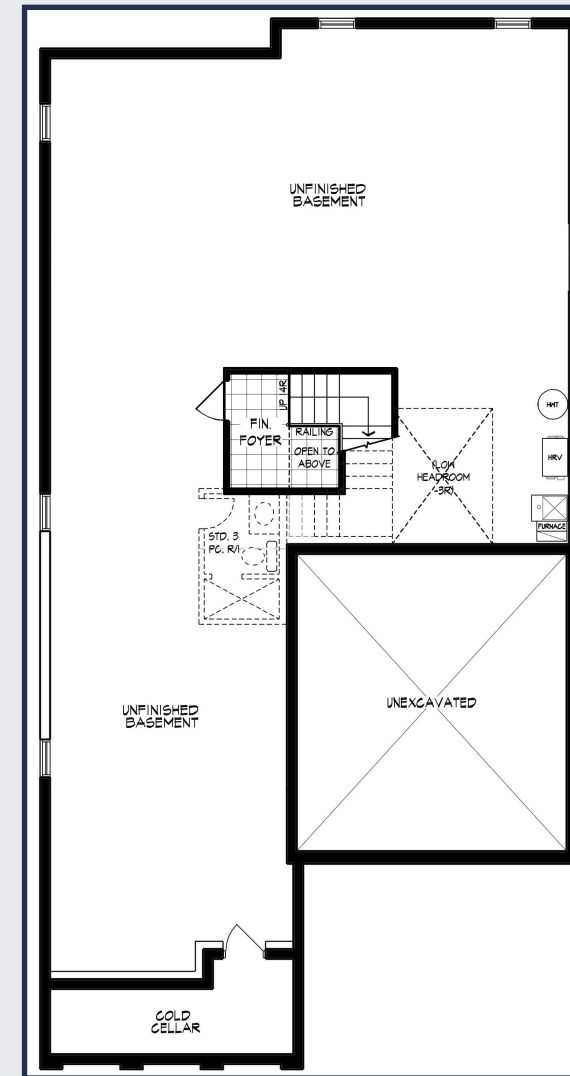


PARTIAL OPT. FINISHED BASEMENT PLAN, EL. 'B'

# THE IRONWOOD



Hedge Road Landing  
Jackson's Point



BASEMENT PLAN, EL. 'A'

All locations are to be approximate and may be impacted by joist locations, HVAC, plumbing, etc... The builder has the right to move locations slightly in order to accommodate house design. Ontario Building Code supersedes anything on this drawing. All material, specifications and floor plans are subject to change without notice. House renderings are artists' conception and may be built as a mirror image. All floor plans are approximate dimensions. Actual usable floor space may vary from the stated floor area. Open to above applicable only on loft plans. Colour representations are approximate and subject to change. Architectural Control may require modifications to exterior materials used, exterior house design, appearance and colours. E&O. E. 2026

© Alliance Homes - 2026