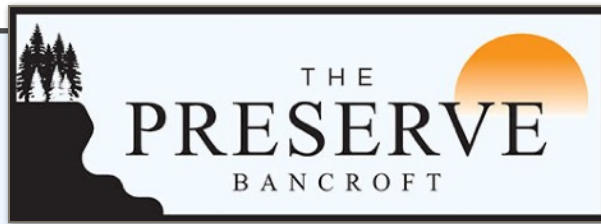


Elevation A - 1,653 square feet (2,137 with loft) (2,218 with extended garage)

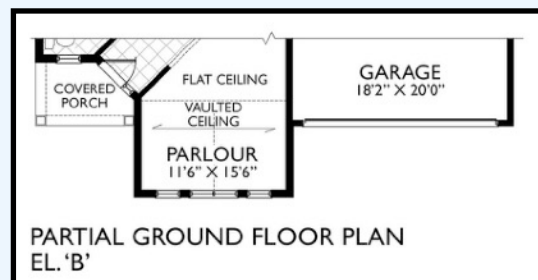
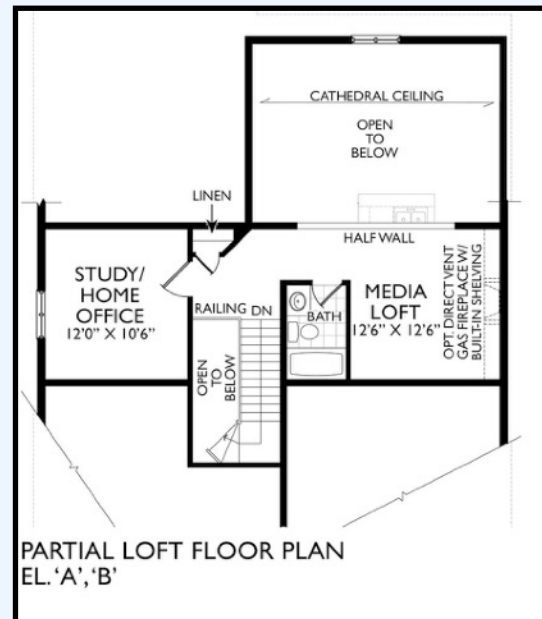
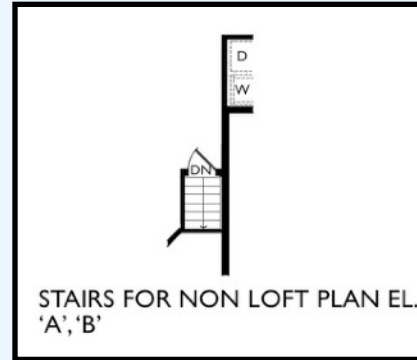
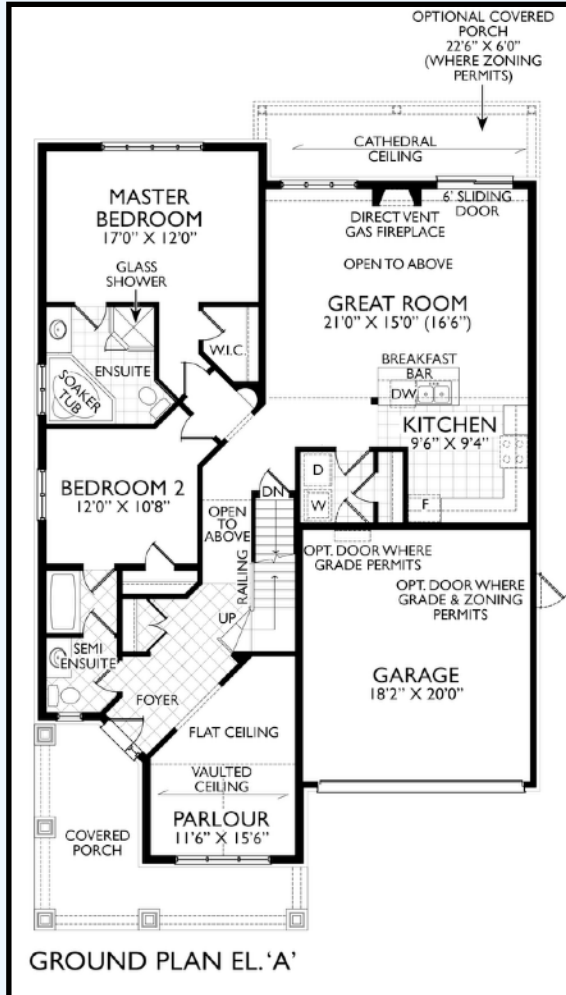
THE BIRCH



Elevation B - 1,657 square feet (2,137 with loft) (2,218 with extended garage)



The Birch

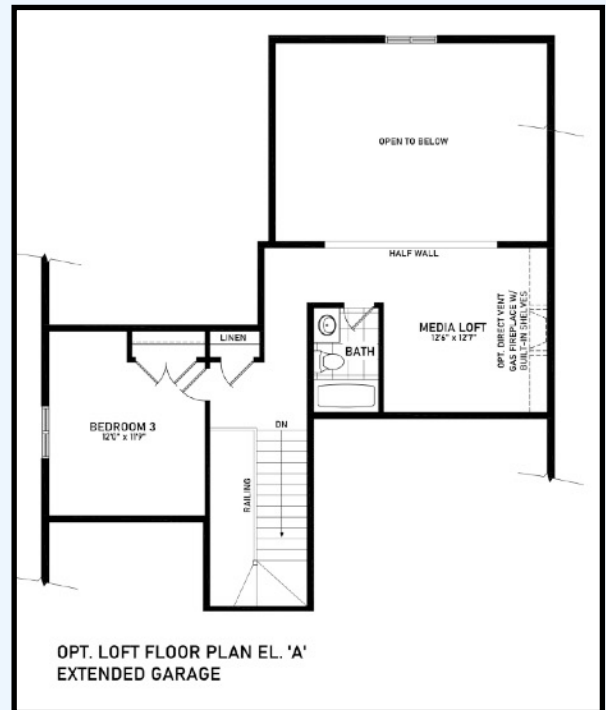
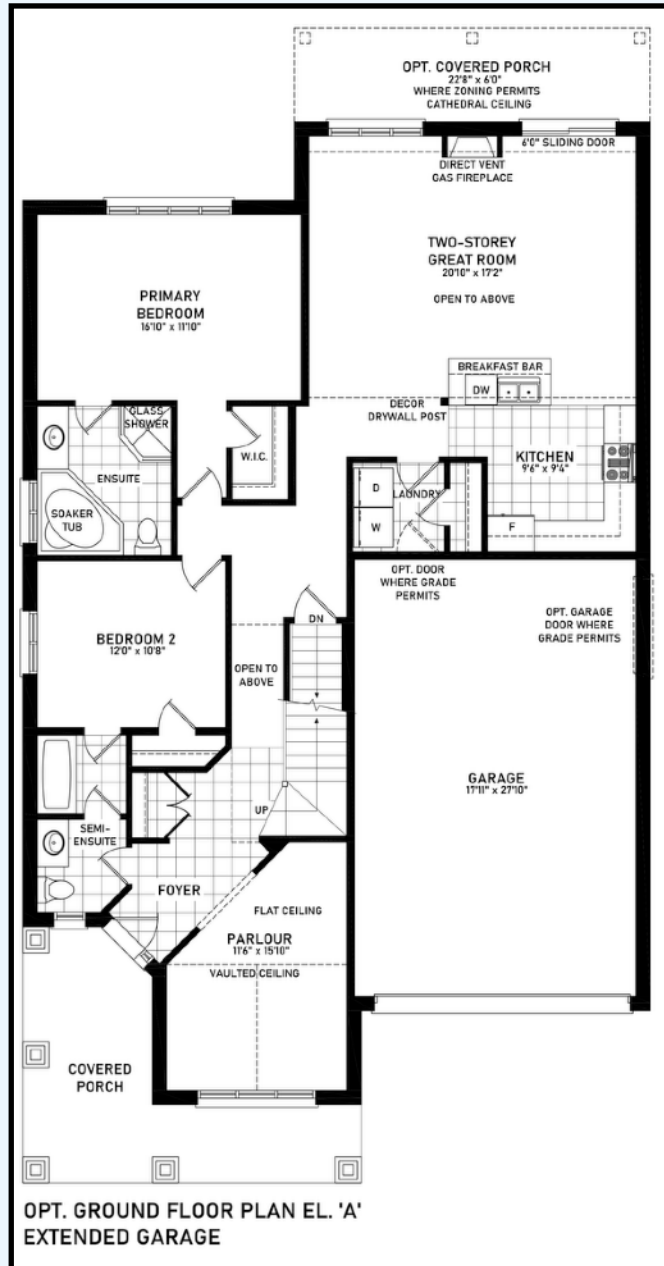


All locations are to be approximate and may be impacted by joist locations, HVAC, plumbing, etc... The builder has the right to move locations slightly in order to accommodate house design. Ontario Building Code supersedes anything on this drawing. All material, specifications and floor plans are subject to change without notice. House renderings are artists' conception and may be built as a mirror image. All floor plans are approximate dimensions. Actual usable floor space may vary from the stated floor area. Open to above applicable only on loft plans. Colour representations are approximate and subject to change. Architectural Control may require modifications to exterior materials used, exterior house design, appearance and colours. E&O. E. 2025

© Alliance Homes - 2025



Extended garage "Toy Storage " option



All locations are to be approximate and may be impacted by joist locations, HVAC, plumbing, etc... The builder has the right to move locations slightly in order to accommodate house design. Ontario Building Code supersedes anything on this drawing. All material, specifications and floor plans are subject to change without notice. House renderings are artists' conception and may be built as a mirror image. All floor plans are approximate dimensions. Actual usable floor space may vary from the stated floor area. Open to above applicable only on loft plans. Colour representations are approximate and subject to change. Architectural Control may require modifications to exterior materials used, exterior house design, appearance and colours. E&O. E. 2025

© Alliance Homes - 2025