

50' SERIES



Hedge Road Landing  
Jackson's Point



Elevation A

The McRae  
1,517 square feet

# The McRae

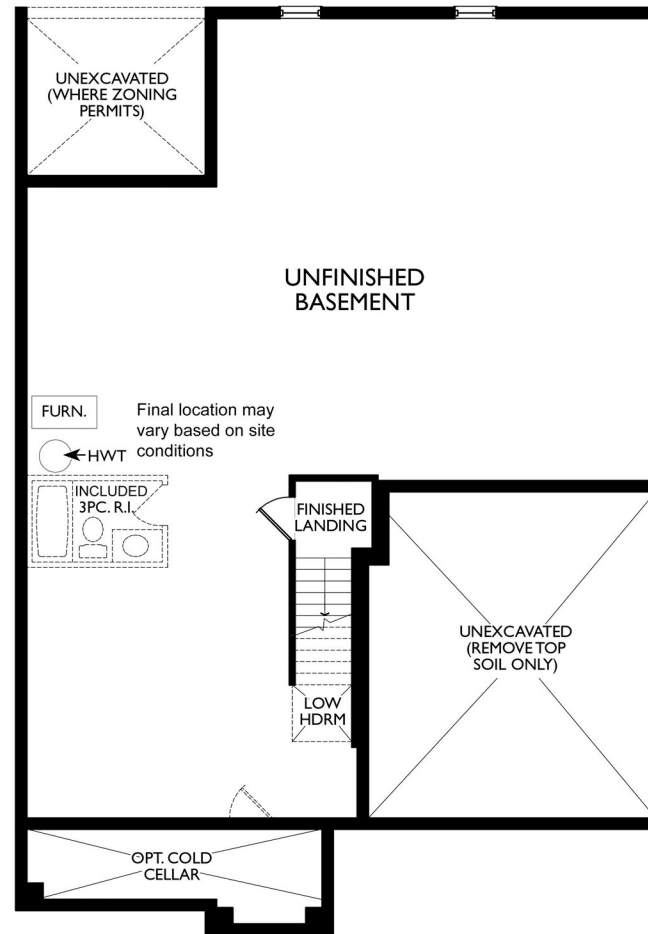
1,517 square feet



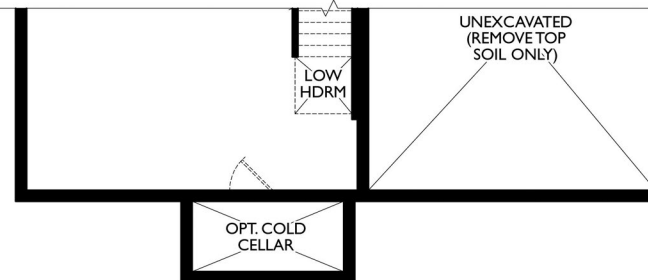
Elevation B



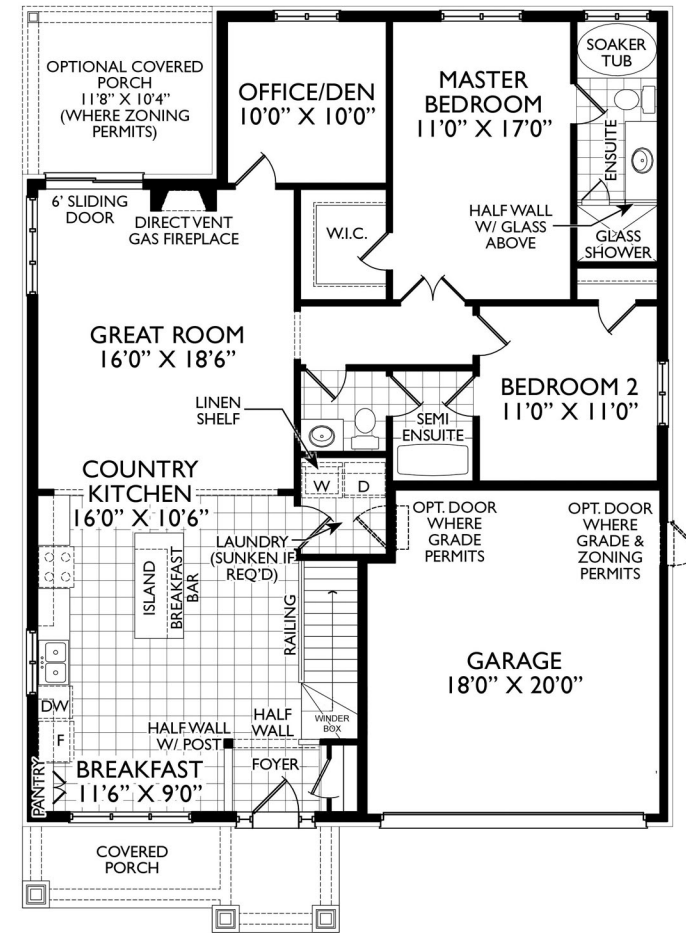
Elevation C



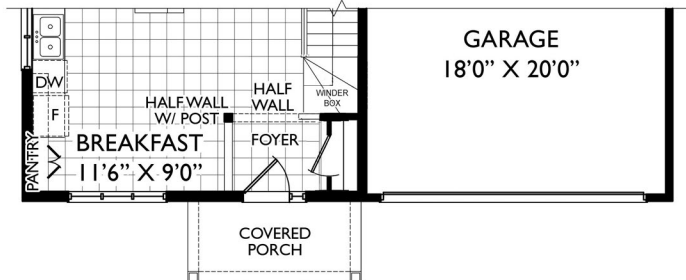
BASEMENT PLAN EL. 'A'



PARTIAL BASEMENT PLAN EL. 'B'



GROUND PLAN EL. 'A'



PARTIAL GROUND FLOOR PLAN EL. 'B' & 'C'

