

40' SERIES



Hedge Road Landing
Jackson's Point



Elevation B

The Matthew
1,733 square feet with loft

The Matthew

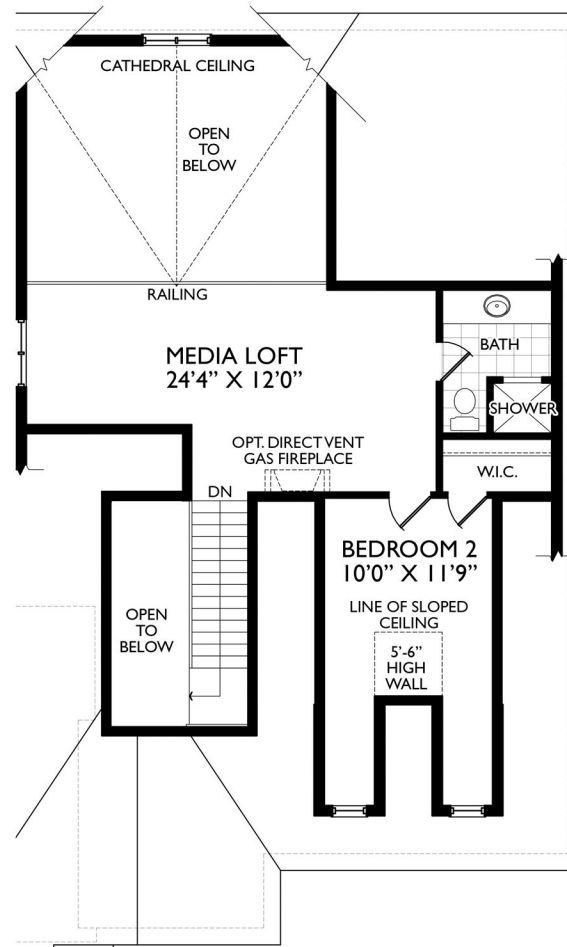
1,733 square feet with loft



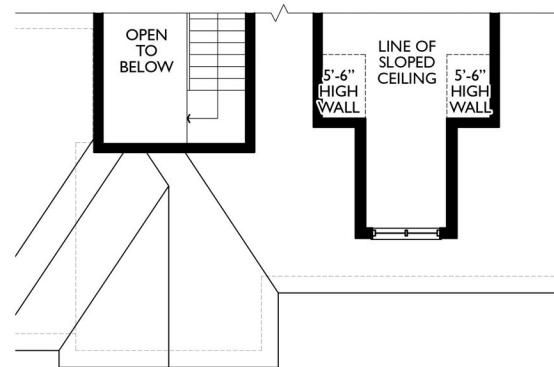
Elevation A



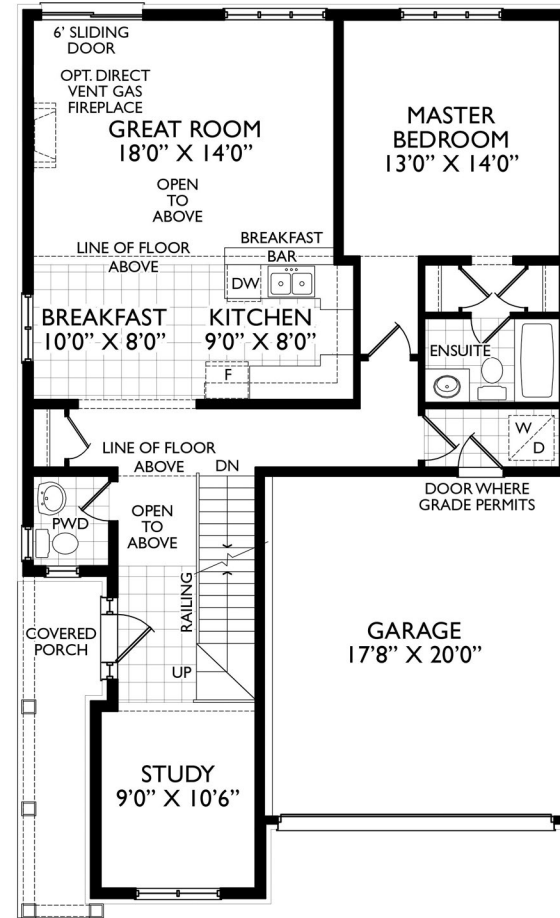
Elevation C (1,725 square feet)



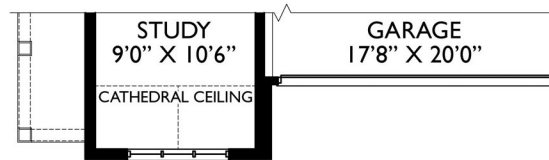
LOFT FLOOR PLAN EL. 'A'



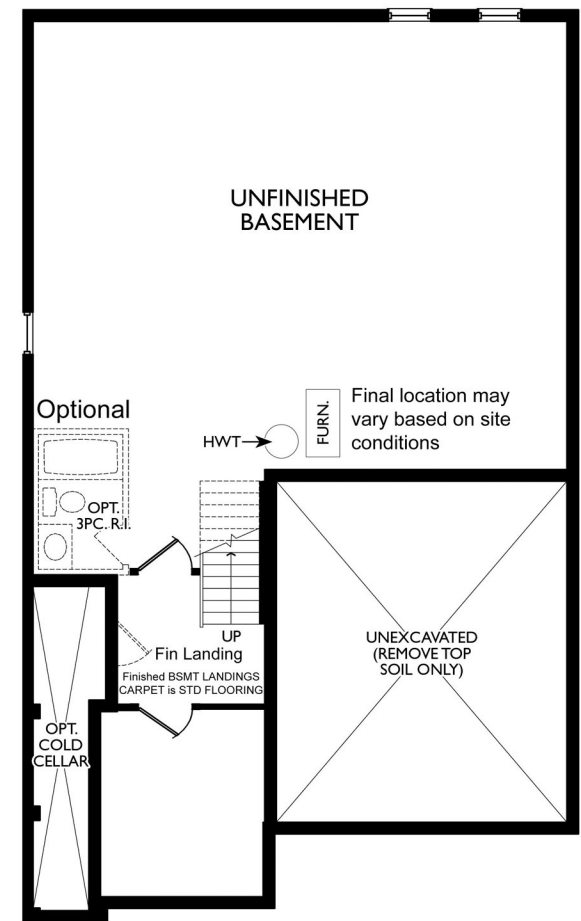
PARTIAL LOFT FLOOR PLAN EL. 'B' & 'C'



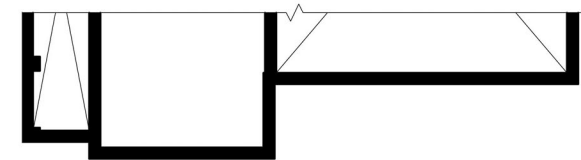
GROUND FLOOR PLAN EL. 'A'



PARTIAL GROUND FLOOR PLAN EL. 'B' & 'C'



BASEMENT PLAN EL. 'A'



PARTIAL BASEMENT PLAN EL. 'B' & 'C'

