

40' SERIES



Hedge Road Landing
Jackson's Point



Elevation C

The Daniel
1,857 square feet with loft

The Daniel

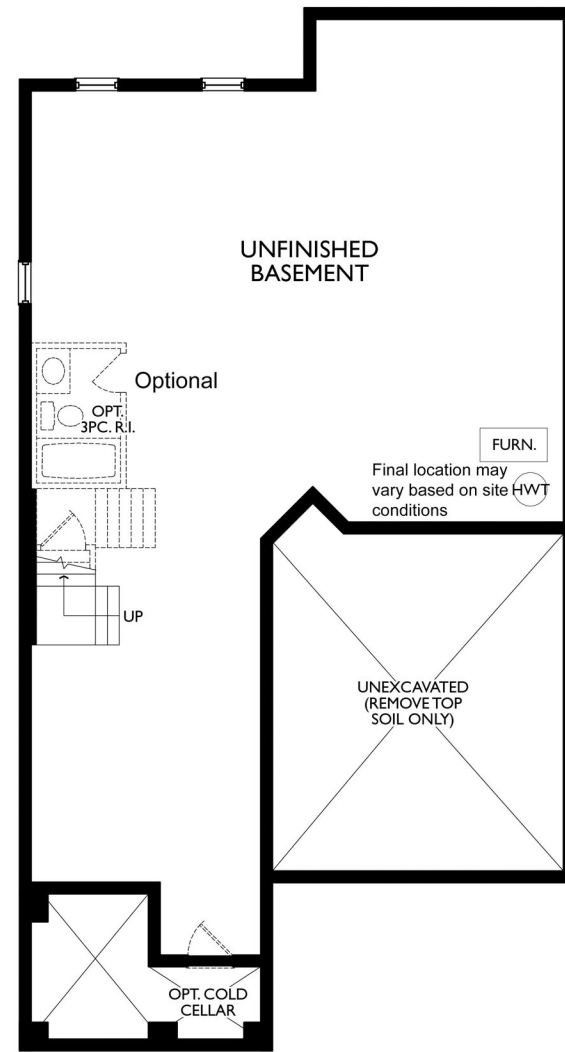
1,857 square feet with loft



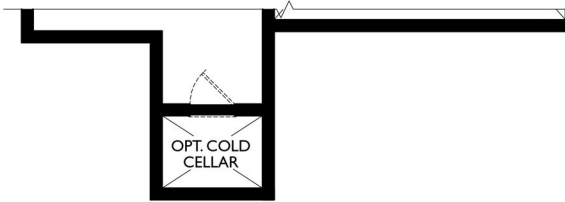
Elevation A



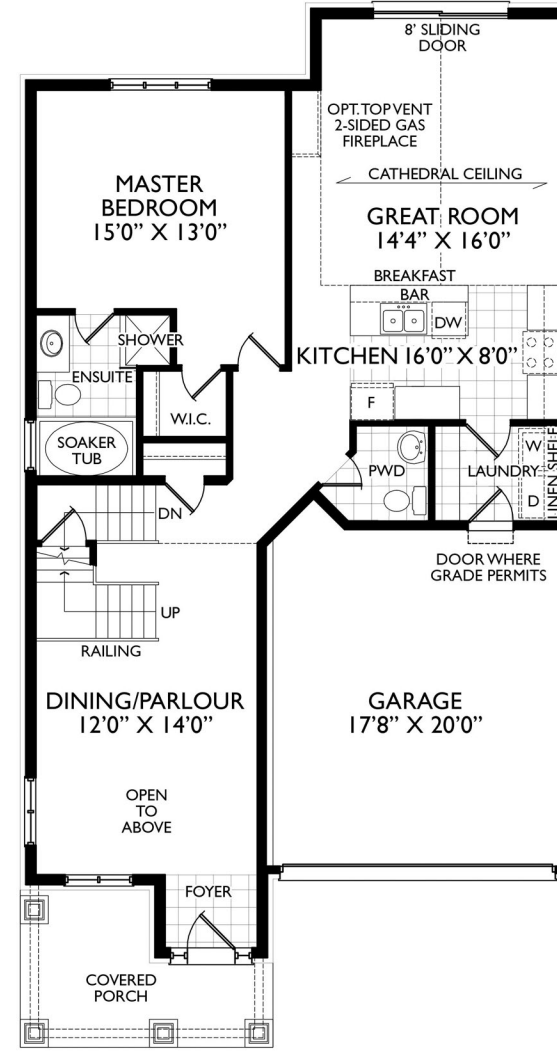
Elevation B (1,869 square feet)



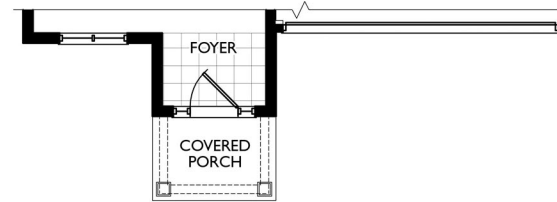
BASEMENT PLAN EL. 'A'



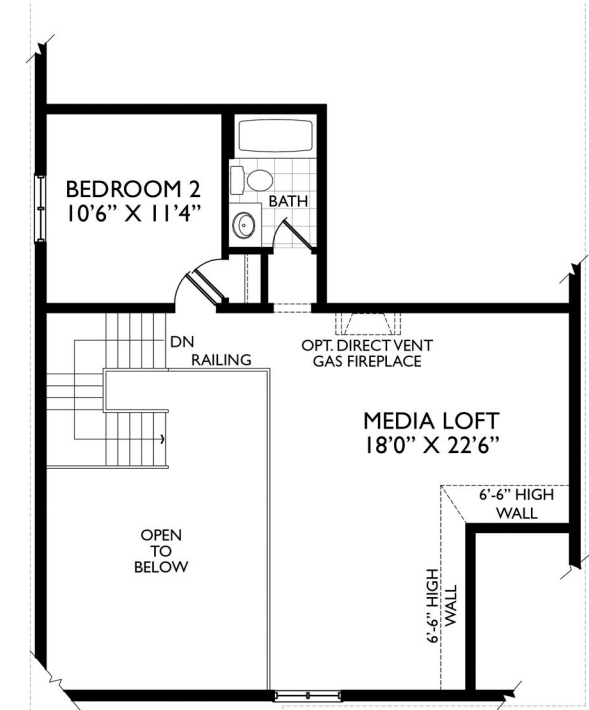
PARTIAL BASEMENT PLAN EL. 'B' & 'C'



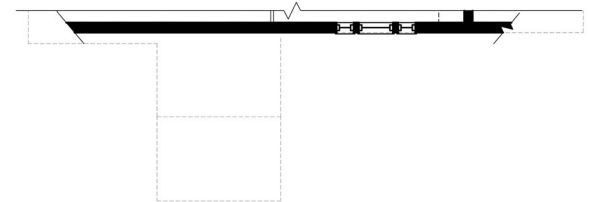
GROUND PLAN EL. 'A'



PARTIAL GROUND FLOOR PLAN EL. 'B' & 'C'



LOFT FLOOR PLAN EL. 'A'



PARTIAL LOFT FLOOR PLAN EL. 'B' & 'C'

