

50' SERIES



Hedge Road Landing  
Jackson's Point



Elevation B

The Mossington  
1,657 square feet (2,107 sq/ft with loft)

# The Mossington

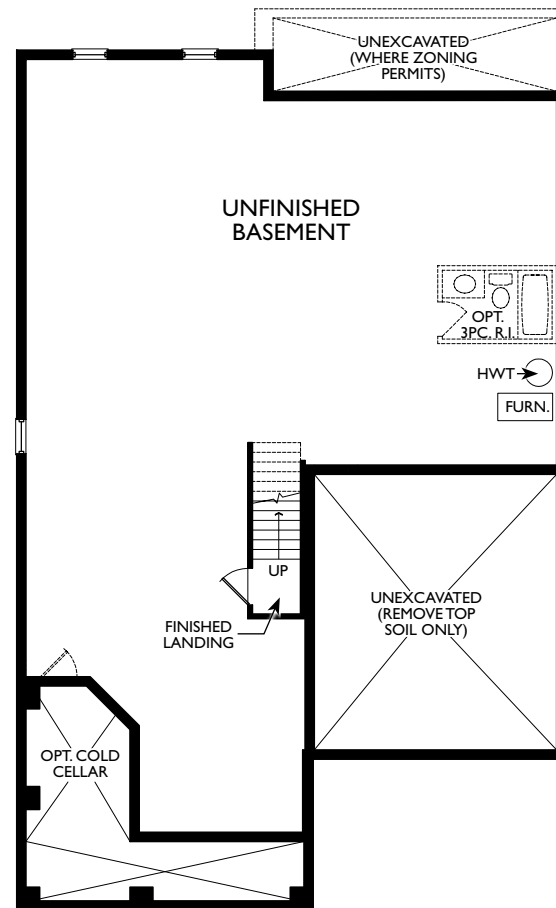
1,653 square feet



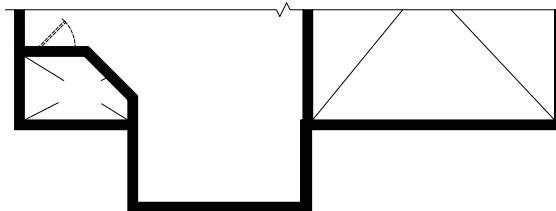
Elevation A (with opt. loft 2,095 sq/ft)



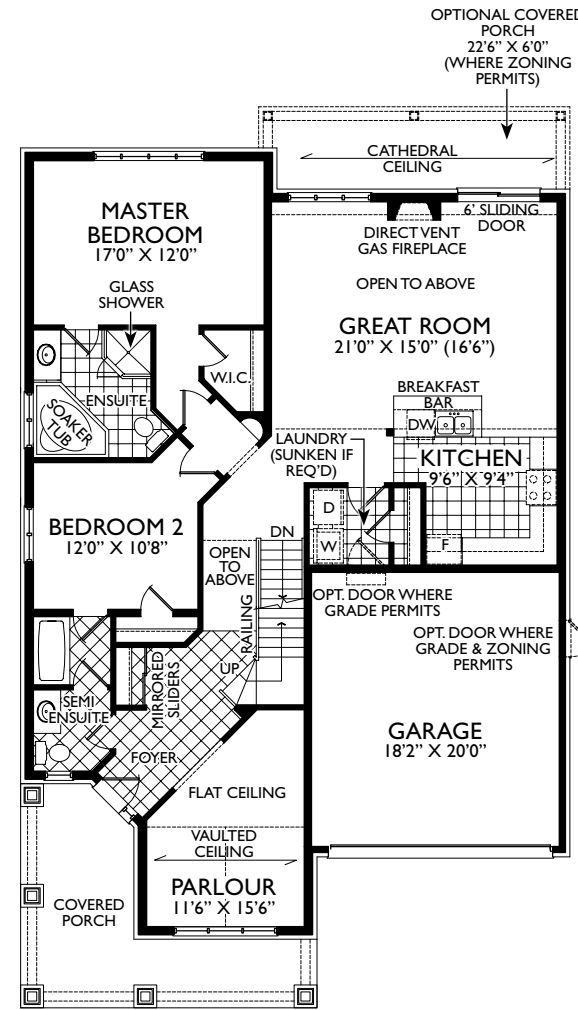
Elevation C (with opt. loft 2,095 sq/ft)



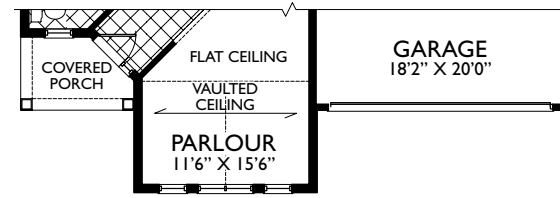
BASEMENT PLAN EL. 'A'



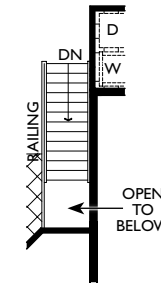
PARTIAL BASEMENT PLAN EL. 'B' & 'C'



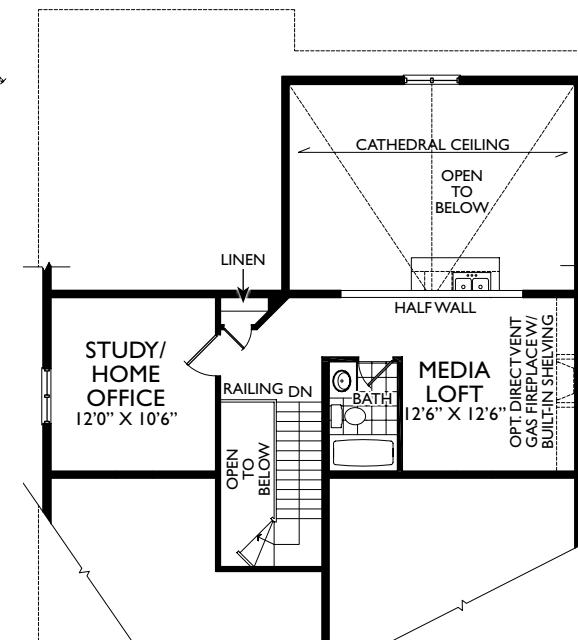
GROUND PLAN EL. 'A'



PARTIAL GROUND FLOOR PLAN EL. 'B' & 'C'



STAIRS FOR NON LOFT PLAN EL. 'A', 'B' & 'C'



PARTIAL LOFT FLOOR PLAN EL. 'A', 'B' & 'C'

