

50' SERIES



Hedge Road Landing
Jackson's Point

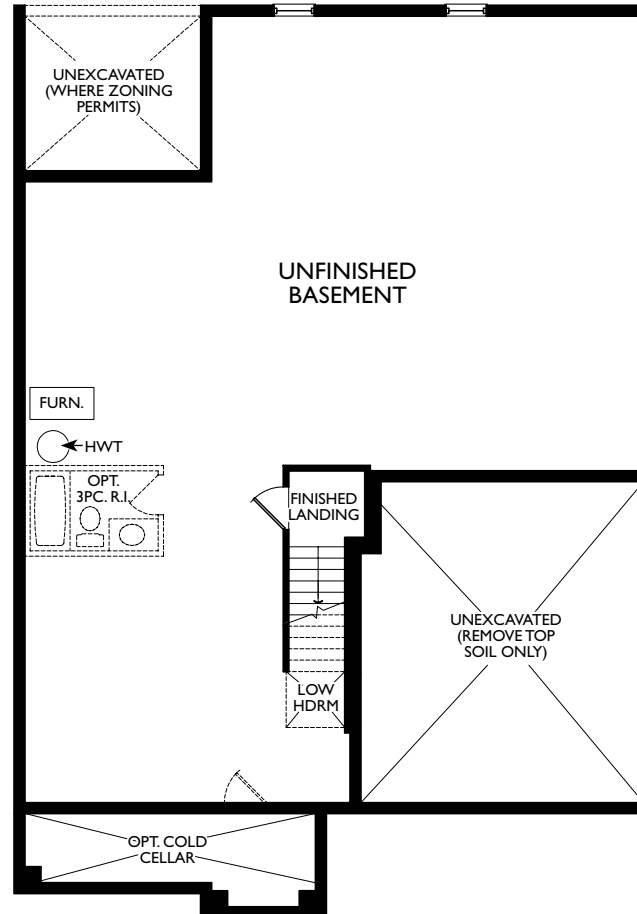


Elevation A

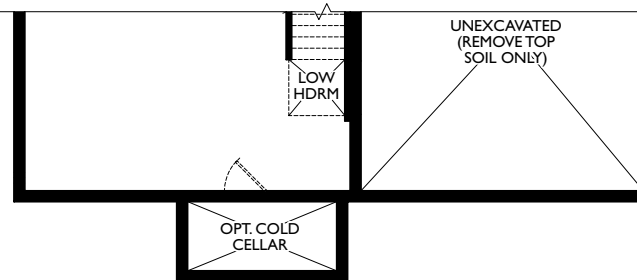
The McRae
1,517 square feet

The McRae

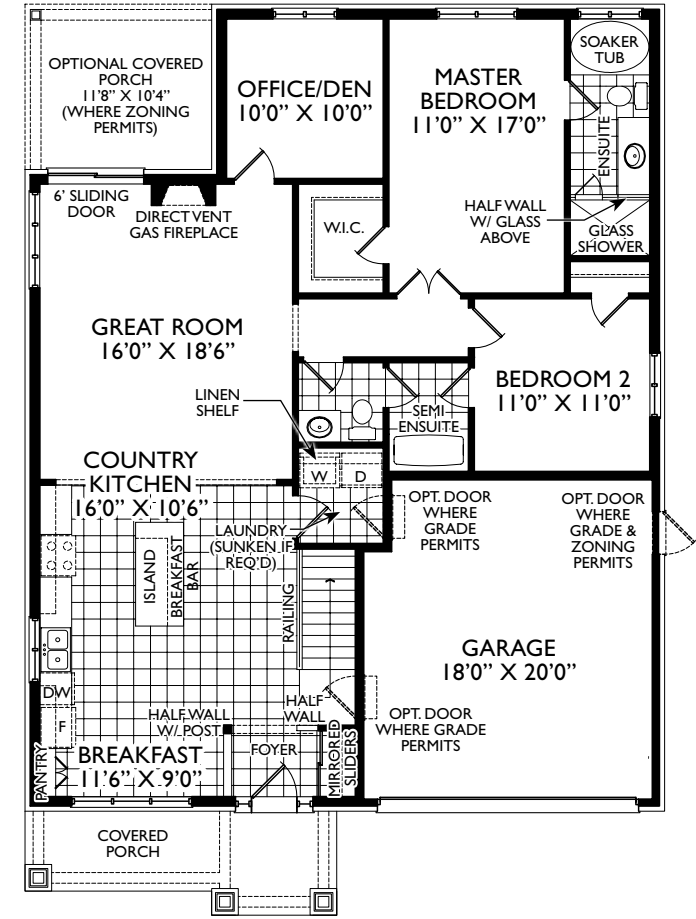
1,517 square feet



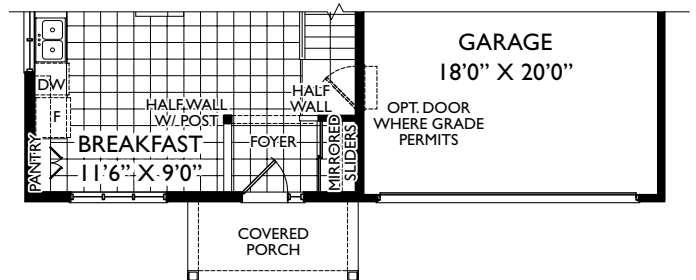
BASEMENT PLAN EL. 'A'



PARTIAL BASEMENT PLAN EL. 'B'



GROUND FLOOR PLAN EL. 'A'



PARTIAL GROUND FLOOR PLAN EL. 'B' & 'C'

