

40' SERIES



Hedge Road Landing
Jackson's Point

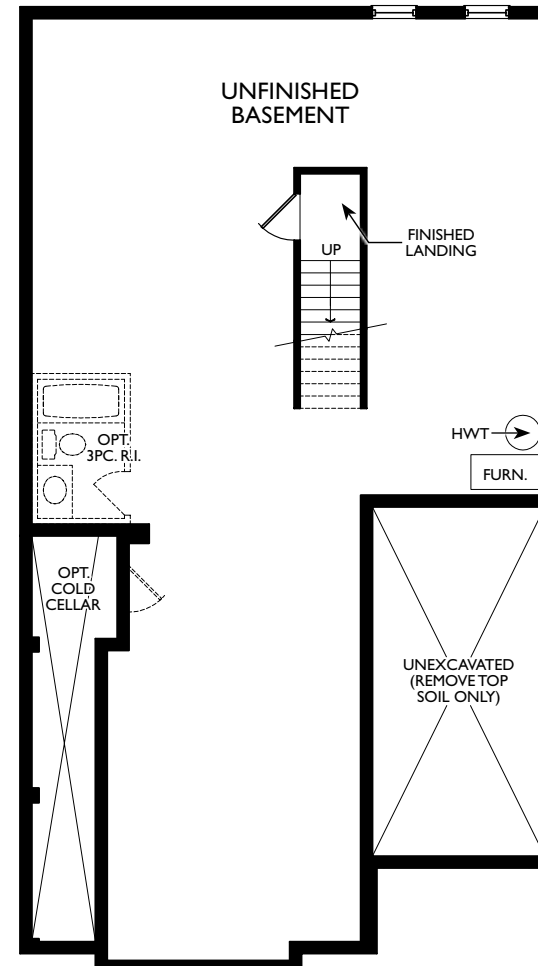


Elevation A

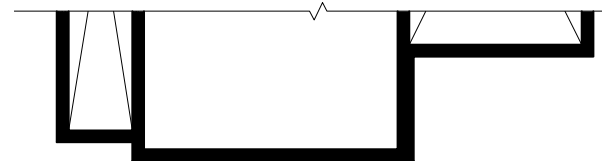
The Dalton
1,303 square feet

The Dalton

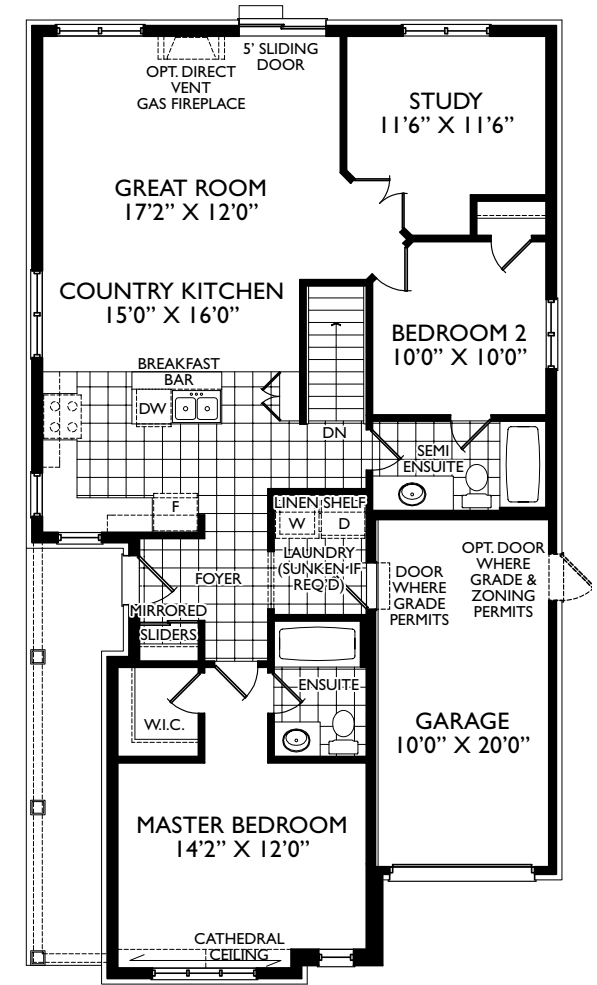
1,303 square feet



BASEMENT PLAN EL. 'A'



PARTIAL BASEMENT PLAN EL. 'B' & 'C'



GROUND FLOOR PLAN EL. 'A'



PARTIAL GROUND FLOOR PLAN EL. 'B' & 'C'

