

40' SERIES



Hedge Road Landing
Jackson's Point



Elevation A

The Blackbird
1,241 square feet

The Blackbird

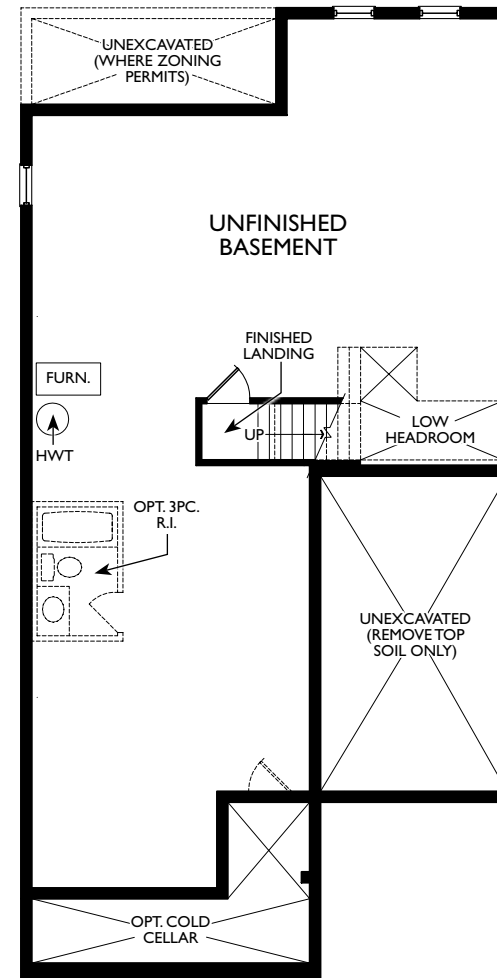
1,241 square feet



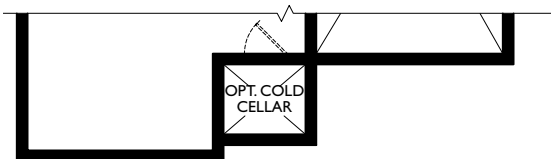
Elevation B



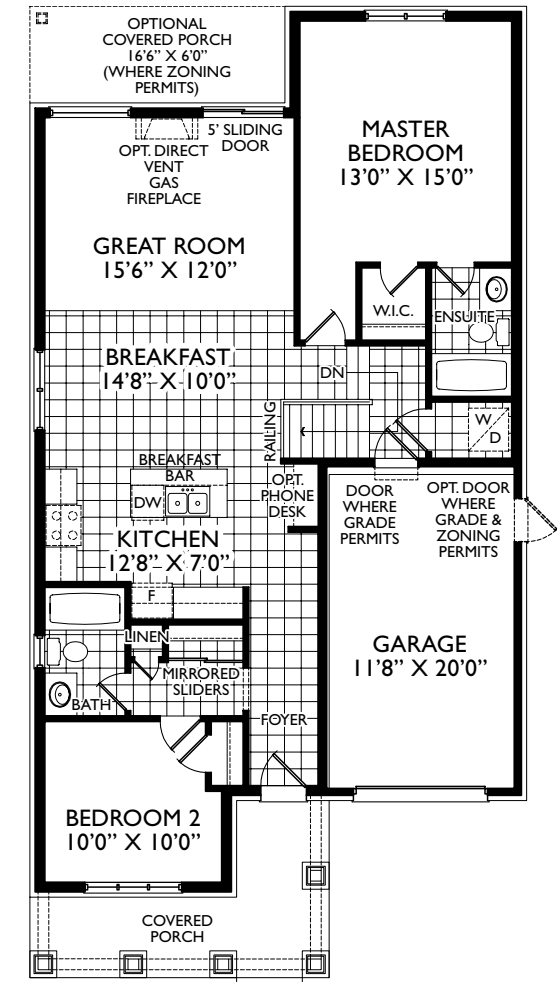
Elevation C



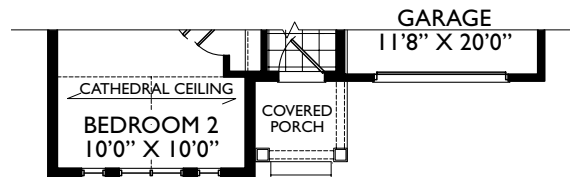
BASEMENT PLAN EL. 'A'



PARTIAL BASEMENT PLAN EL. 'B' & 'C'



GROUND PLAN EL. 'A'



PARTIAL GROUND FLOOR PLAN EL. 'B' & 'C'

